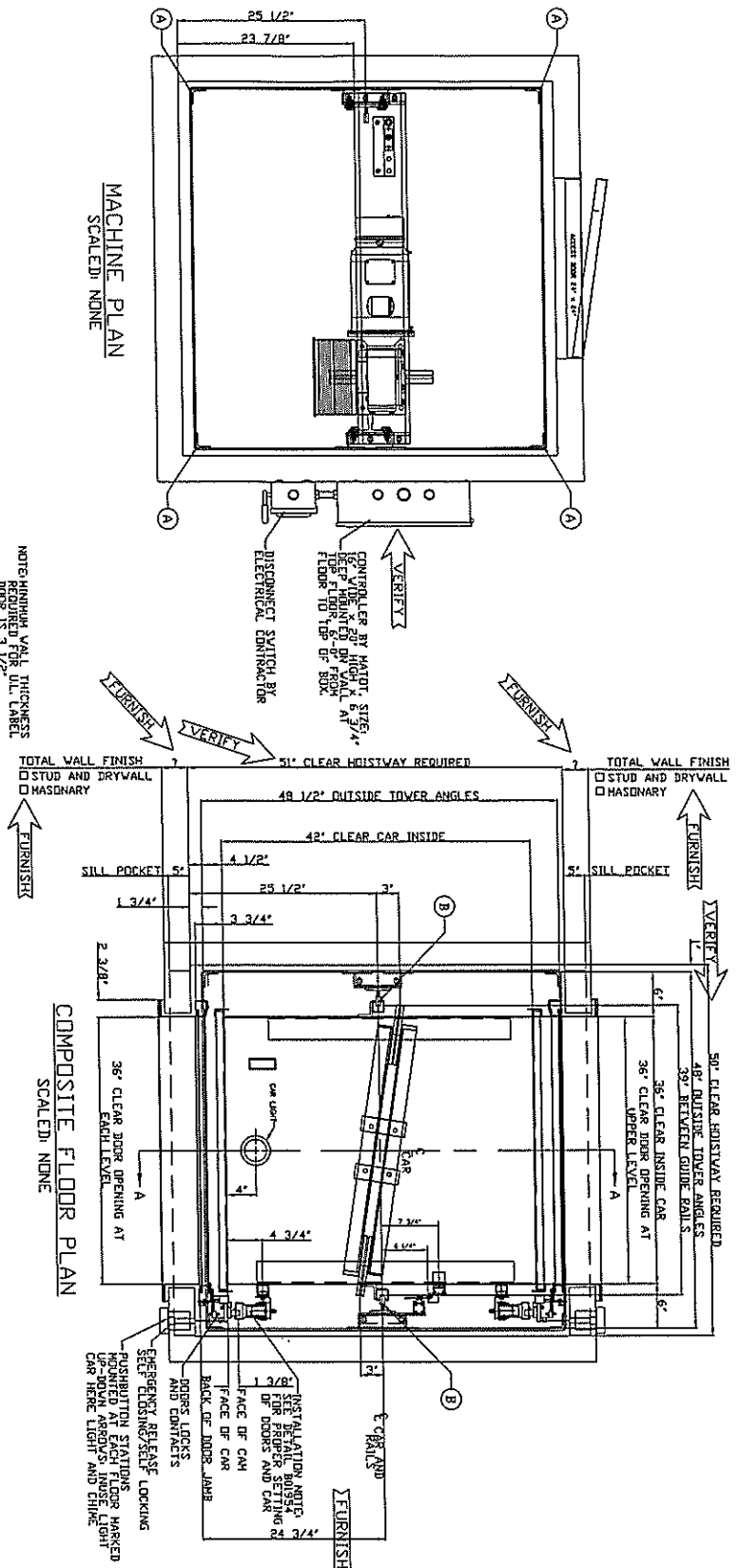


**DO NOT USE FOR  
INSTALLATION  
FINAL INSTALLATION  
PRINT WILL BE PROVIDED**

HAIOT EQUIPMENT IS MANUFACTURED TO THE LATEST EDITION OF ANSI A71 CODE. IT IS THE RESPONSIBILITY OF THE PURCHASER TO CONFIRM COMPLIANCE WITH ANY LOCAL STATE OR CITY CODES.

**MACHINE PLAN**  
SCALE: NONE

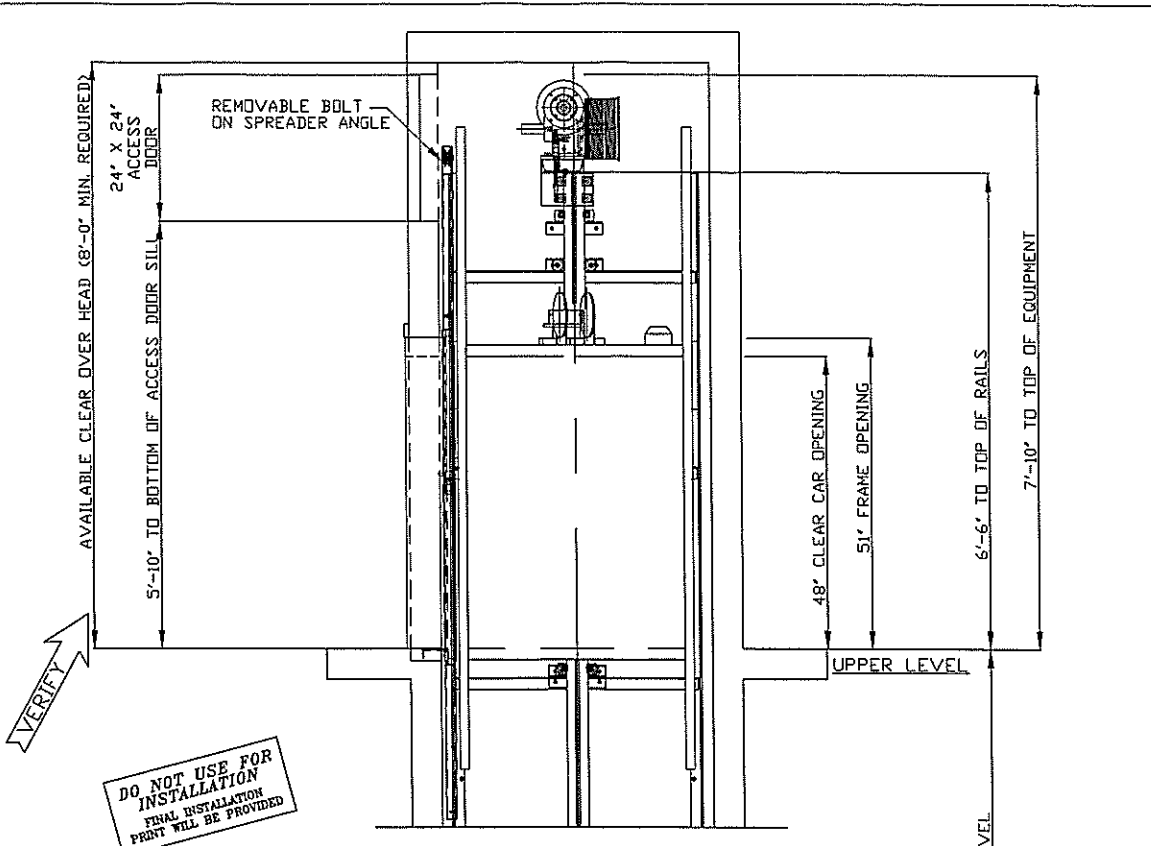
NOTE: FINISH WITH THICKNESS MINIMUM 1/2" FOR ALL WALLS AND DOOR IS 3 1/2"



ITEM	DESCRIPTION	REMARKS
1	STAINLESS STEEL	FOR ALL EXPOSED SURFACES
2	304 STAINLESS STEEL	FOR ALL EXPOSED SURFACES
3	ALUMINUM	FOR ALL EXPOSED SURFACES
4	BRASS	FOR ALL EXPOSED SURFACES
5	BRASS	FOR ALL EXPOSED SURFACES
6	BRASS	FOR ALL EXPOSED SURFACES
7	BRASS	FOR ALL EXPOSED SURFACES
8	BRASS	FOR ALL EXPOSED SURFACES
9	BRASS	FOR ALL EXPOSED SURFACES
10	BRASS	FOR ALL EXPOSED SURFACES
11	BRASS	FOR ALL EXPOSED SURFACES
12	BRASS	FOR ALL EXPOSED SURFACES
13	BRASS	FOR ALL EXPOSED SURFACES
14	BRASS	FOR ALL EXPOSED SURFACES
15	BRASS	FOR ALL EXPOSED SURFACES
16	BRASS	FOR ALL EXPOSED SURFACES
17	BRASS	FOR ALL EXPOSED SURFACES
18	BRASS	FOR ALL EXPOSED SURFACES
19	BRASS	FOR ALL EXPOSED SURFACES
20	BRASS	FOR ALL EXPOSED SURFACES
21	BRASS	FOR ALL EXPOSED SURFACES
22	BRASS	FOR ALL EXPOSED SURFACES
23	BRASS	FOR ALL EXPOSED SURFACES
24	BRASS	FOR ALL EXPOSED SURFACES
25	BRASS	FOR ALL EXPOSED SURFACES
26	BRASS	FOR ALL EXPOSED SURFACES
27	BRASS	FOR ALL EXPOSED SURFACES
28	BRASS	FOR ALL EXPOSED SURFACES
29	BRASS	FOR ALL EXPOSED SURFACES
30	BRASS	FOR ALL EXPOSED SURFACES
31	BRASS	FOR ALL EXPOSED SURFACES
32	BRASS	FOR ALL EXPOSED SURFACES
33	BRASS	FOR ALL EXPOSED SURFACES
34	BRASS	FOR ALL EXPOSED SURFACES
35	BRASS	FOR ALL EXPOSED SURFACES
36	BRASS	FOR ALL EXPOSED SURFACES
37	BRASS	FOR ALL EXPOSED SURFACES
38	BRASS	FOR ALL EXPOSED SURFACES
39	BRASS	FOR ALL EXPOSED SURFACES
40	BRASS	FOR ALL EXPOSED SURFACES
41	BRASS	FOR ALL EXPOSED SURFACES
42	BRASS	FOR ALL EXPOSED SURFACES
43	BRASS	FOR ALL EXPOSED SURFACES
44	BRASS	FOR ALL EXPOSED SURFACES
45	BRASS	FOR ALL EXPOSED SURFACES
46	BRASS	FOR ALL EXPOSED SURFACES
47	BRASS	FOR ALL EXPOSED SURFACES
48	BRASS	FOR ALL EXPOSED SURFACES
49	BRASS	FOR ALL EXPOSED SURFACES
50	BRASS	FOR ALL EXPOSED SURFACES
51	BRASS	FOR ALL EXPOSED SURFACES
52	BRASS	FOR ALL EXPOSED SURFACES
53	BRASS	FOR ALL EXPOSED SURFACES
54	BRASS	FOR ALL EXPOSED SURFACES
55	BRASS	FOR ALL EXPOSED SURFACES
56	BRASS	FOR ALL EXPOSED SURFACES
57	BRASS	FOR ALL EXPOSED SURFACES
58	BRASS	FOR ALL EXPOSED SURFACES
59	BRASS	FOR ALL EXPOSED SURFACES
60	BRASS	FOR ALL EXPOSED SURFACES
61	BRASS	FOR ALL EXPOSED SURFACES
62	BRASS	FOR ALL EXPOSED SURFACES
63	BRASS	FOR ALL EXPOSED SURFACES
64	BRASS	FOR ALL EXPOSED SURFACES
65	BRASS	FOR ALL EXPOSED SURFACES
66	BRASS	FOR ALL EXPOSED SURFACES
67	BRASS	FOR ALL EXPOSED SURFACES
68	BRASS	FOR ALL EXPOSED SURFACES
69	BRASS	FOR ALL EXPOSED SURFACES
70	BRASS	FOR ALL EXPOSED SURFACES
71	BRASS	FOR ALL EXPOSED SURFACES
72	BRASS	FOR ALL EXPOSED SURFACES
73	BRASS	FOR ALL EXPOSED SURFACES
74	BRASS	FOR ALL EXPOSED SURFACES
75	BRASS	FOR ALL EXPOSED SURFACES
76	BRASS	FOR ALL EXPOSED SURFACES
77	BRASS	FOR ALL EXPOSED SURFACES
78	BRASS	FOR ALL EXPOSED SURFACES
79	BRASS	FOR ALL EXPOSED SURFACES
80	BRASS	FOR ALL EXPOSED SURFACES
81	BRASS	FOR ALL EXPOSED SURFACES
82	BRASS	FOR ALL EXPOSED SURFACES
83	BRASS	FOR ALL EXPOSED SURFACES
84	BRASS	FOR ALL EXPOSED SURFACES
85	BRASS	FOR ALL EXPOSED SURFACES
86	BRASS	FOR ALL EXPOSED SURFACES
87	BRASS	FOR ALL EXPOSED SURFACES
88	BRASS	FOR ALL EXPOSED SURFACES
89	BRASS	FOR ALL EXPOSED SURFACES
90	BRASS	FOR ALL EXPOSED SURFACES
91	BRASS	FOR ALL EXPOSED SURFACES
92	BRASS	FOR ALL EXPOSED SURFACES
93	BRASS	FOR ALL EXPOSED SURFACES
94	BRASS	FOR ALL EXPOSED SURFACES
95	BRASS	FOR ALL EXPOSED SURFACES
96	BRASS	FOR ALL EXPOSED SURFACES
97	BRASS	FOR ALL EXPOSED SURFACES
98	BRASS	FOR ALL EXPOSED SURFACES
99	BRASS	FOR ALL EXPOSED SURFACES
100	BRASS	FOR ALL EXPOSED SURFACES

**GENERAL NOTES:**  
 1. Before arriving on site, verify that the location of the machine is correct and that the floor is level.  
 2. All dimensions are in inches unless otherwise specified.  
 3. All materials shall be of the highest quality available.  
 4. All work shall be done in accordance with the applicable codes and standards.  
 5. All electrical work shall be done in accordance with the applicable codes and standards.  
 6. All plumbing work shall be done in accordance with the applicable codes and standards.  
 7. All mechanical work shall be done in accordance with the applicable codes and standards.  
 8. All painting work shall be done in accordance with the applicable codes and standards.  
 9. All finishing work shall be done in accordance with the applicable codes and standards.  
 10. All work shall be completed within the specified time frame.

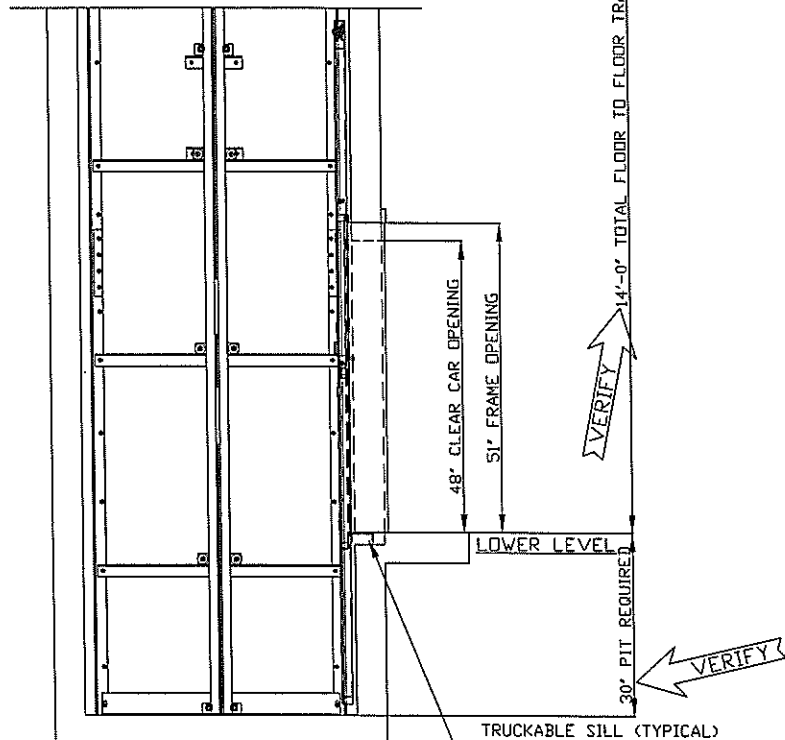
STRUCTURES & EQUIPMENT, ACCORDING TO THE CODES AND STANDARDS OF THE MANUFACTURER.  
 ALL DIMENSIONS ARE IN INCHES UNLESS OTHERWISE SPECIFIED.  
 FINISH MATERIALS SHALL BE AS SPECIFIED IN THE DRAWING.  
 ALL WORK SHALL BE DONE IN ACCORDANCE WITH THE APPLICABLE CODES AND STANDARDS.  
 ALL MATERIALS SHALL BE OF THE HIGHEST QUALITY AVAILABLE.  
 ALL ELECTRICAL WORK SHALL BE DONE IN ACCORDANCE WITH THE APPLICABLE CODES AND STANDARDS.  
 ALL PLUMBING WORK SHALL BE DONE IN ACCORDANCE WITH THE APPLICABLE CODES AND STANDARDS.  
 ALL MECHANICAL WORK SHALL BE DONE IN ACCORDANCE WITH THE APPLICABLE CODES AND STANDARDS.  
 ALL PAINTING WORK SHALL BE DONE IN ACCORDANCE WITH THE APPLICABLE CODES AND STANDARDS.  
 ALL FINISHING WORK SHALL BE DONE IN ACCORDANCE WITH THE APPLICABLE CODES AND STANDARDS.  
 ALL WORK SHALL BE COMPLETED WITHIN THE SPECIFIED TIME FRAME.



**DO NOT USE FOR INSTALLATION**  
FINAL INSTALLATION PRINT WILL BE PROVIDED

- INSTALLATION NOTES:**
- 1) NORMAL LIMIT SWITCHES EVEN WITH CAR TOP. FINAL LIMITS 4" BEYOND NORMALS.
  - 2) TOTAL RAIL LENGTH 23'-0". STACK MALE END UP. 3'-0" SECTION AT BOTTOM.
  - 3) SUSPENDED CEILING MUST NOT OBSTRUCT PASSAGE TO OR OPERATION OF ACCESS DOOR.
  - 4) HOISTWAY DOOR WALLS MUST NOT BE ERECTED UNTIL DOORS ARE SET IN PLACE.
  - \*) THIS DIMENSIONS PROVIDES 1/2" CLEARANCE AT DOOR LOCK KEEPER AND GATE TRACK AND 1 1/8" FROM GATE FACE TO REAR DOOR PANEL.
  - 5) SOLID STOPS LOCATED AT 22'-2 3/4".

MATOT EQUIPMENT IS MANUFACTURED TO THE LATEST EDITION OF ANSI A17.1 CODE. IT IS THE RESPONSIBILITY OF THE PURCHASER TO CONFIRM COMPLIANCE WITH ANY LOCAL STATE OR CITY CODES.



**VIEW A-A**  
SCALE: NONE

TRUCKABLE SILL (TYPICAL)  
2" DEEP POCKET X 5" WIDE X FULL WIDTH OF HATCH. (GROUTING BY OTHERS)

REVISIONS	DATE	DATE
<b>MATOT, INC.</b>		
SCALE: NONE	DATE: 11/26/12	OWN. BY: JAL
<b>ELEVATION VIEW GREATWEST BREWERY SASKATOON, CANADA</b>		
JOB No. 132294	SHEET 2 OF 2	DRAWING No. 132294-EL